



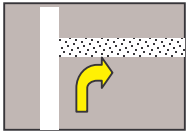
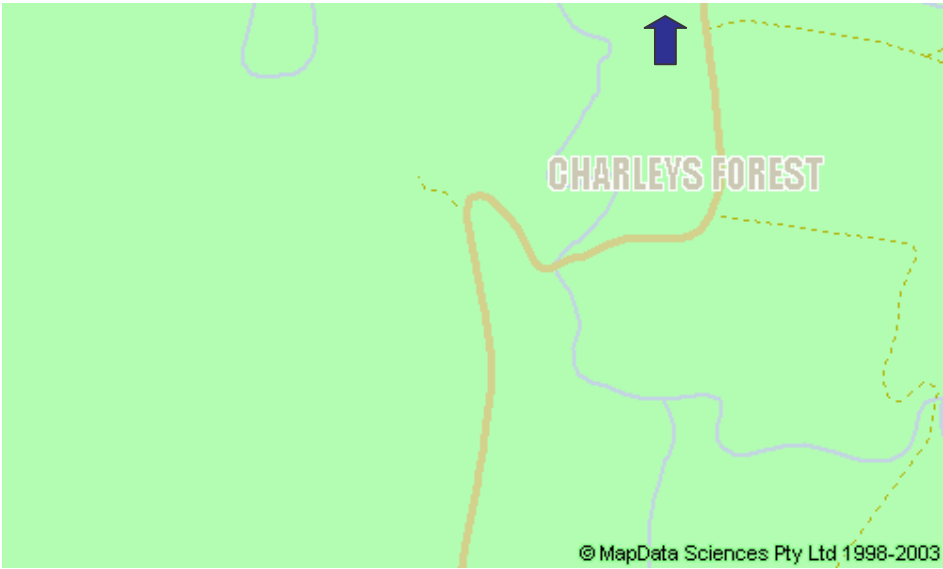


Driving Directions to DUNGHAVEN from CANBERRA

Description	ODO	
<p>From CANBERRA, take the KINGS HIGHWAY to the town of BRAIDWOOD.</p>		 <p>© MapData Sciences Pty Ltd 1998-2003</p>
<p>Once in BRAIDWOOD, turn LEFT into WILSON STREET.</p> <p>This becomes MONGARLOWE ROAD when it leaves town.</p>	<p>START NOW</p> <p>480m</p>	 <p>© MapData Sciences Pty Ltd 1998-2003</p>
<p>Follow MONGARLOWE ROAD out of BRAIDWOOD to the town of MONGARLOWE.</p> <p>Continue following the same road though the town of MONGARLOWE.</p> <p>It becomes CHARLEY'S FOREST ROAD when it leaves MONGARLOWE.</p>	<p>14km</p>	 <p>© MapData Sciences Pty Ltd 1998-2003</p>

<p>Continue following CHARLEY’S FOREST RD though CHARLEYS FOREST.</p>	<p>Sharp bend at 20.5km</p>
<p>Turn RIGHT onto the PRIVATE ROAD at the sign “ROSE VALLEY”. This sign is posted on both sides of the gate that leads to the property.</p> <p>If you reach as sign saying MORTON NATIONAL PARK, you have gone about 2km too far.</p>	<p>35km</p> <p>(37km)</p>
<p>Follow the PRIVATE ROAD for approximately 5 km to “The Danelaw” and the village – “Dunghaven”.</p> <p>Watch for the Dungbeetle marker posts! Because just like Danelaw these little guys are pushing shit up hill!</p>	<p>40km</p> 



Rose Valley

